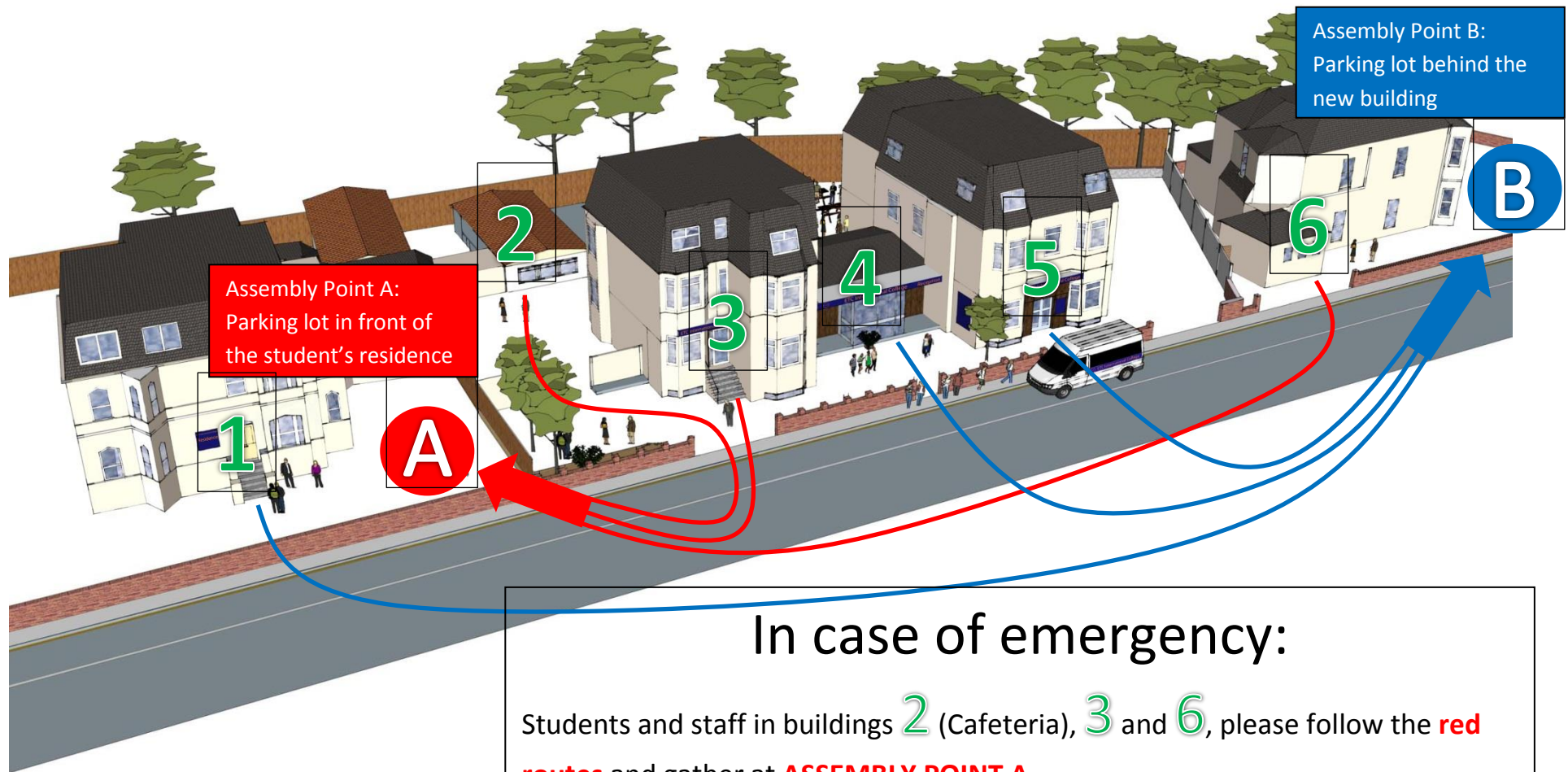


# EVACUATION ROUTES



## In case of emergency:

Students and staff in buildings **2** (Cafeteria), **3** and **6**, please follow the **red routes** and gather at **ASSEMBLY POINT A**.

Students and staff in buildings **1** (Residence), **4** (Reception) and **5**, please follow the **blue routes** and gather at **ASSEMBLY POINT B**.